

***Hibbertia cuneiformis***  
**Commonly: Cutleaf Hibbertia**  
**Vascular Plant Family: Dilleniaceae**  
Flowers winter and summer

*Hibbertia cuneiformis* is an erect shrub up to 2m tall. It has no hairs on the stem or leaves.



The large yellow flowers are solitary reaching 50mm across. The petals have a wavy margin with a small tooth at the top. There are 15-25 stamens fused by their stalks into 5 bundles.



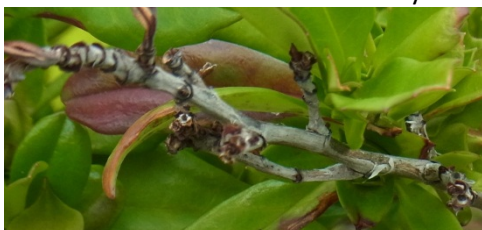
The leaves are broader at the top than at the base, up to 40mm long and 20mm wide, toothed towards the apex.



The ovary is 5 celled but it is more readily observed in the fruit. In fruit the 5 sepals are present, the petals have been shed but the bundles of stamens are still present. In the photograph below, 4 of the cells of the ovary are obvious and the fifth is hidden by a bundle of stamens.



The base of the leaf is stem claspng which leave scars on the stem when they fall.



Refer also to Peppy Plants article [Hibbertia cuneiformis](#)