

****Pelargonium capitatum***
Commonly: Rose Pelargonium
Vascular Plant Family: Geraniaceae

Flowers winter to summer

**Pelargonium capitatum* is a sprawling shrub to 1m tall covered in dense spreading hairs. It is a native of South Africa



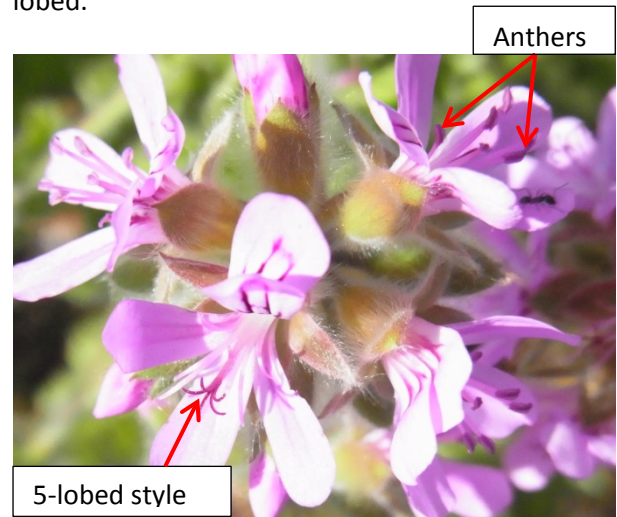
The leaves are stalked and vary between scattered and opposite. They are nearly circular in outline up to 8cm long and 8cm wide, irregularly 3-7 lobed. The margin has tiny pointed teeth.



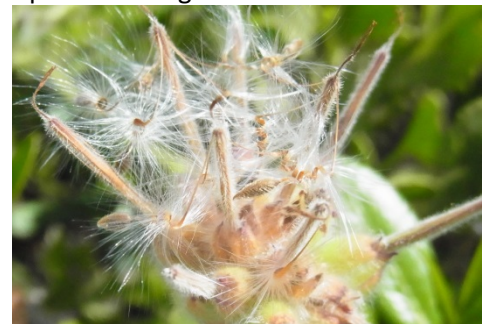
The inflorescence is a dense head. The flowers are pink to purple with dark pink to purple veins.



The 5 sepals are up to 9mm long and covered with long hairs. The 5 petals are up to 2cm long. There are 10 stamens fused into a tube but only 6-8 are fertile, the other 2-4 lack an anther. The style is 5 lobed.



The fruit consists of 5 fruitlets, 6mm long, joined at their tip into a beak. The beak separates into hairy awns up to 3cm long.



The awns twist in a corkscrew fashion when mature.



*Indicates it is a weed